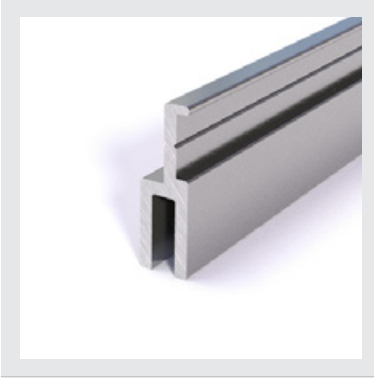


Product List





▼ PROFILES



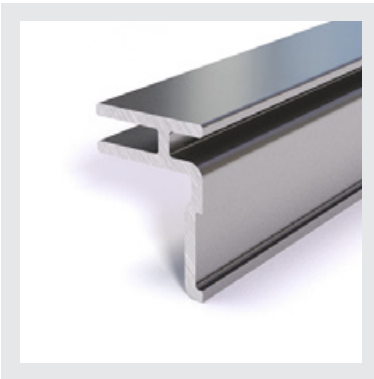
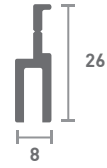
Retro

RX-100

lengths of 6.5m

 **WEIGHT**

0.24 kg per
linear metre



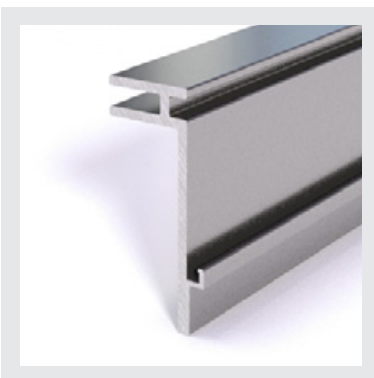
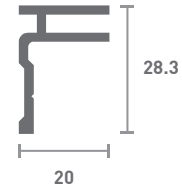
Universal

RX-101

lengths of 6.5m

 **WEIGHT**

0.33 kg per
linear metre



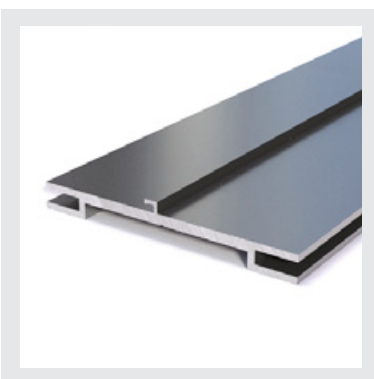
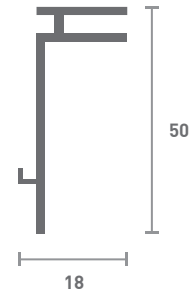
Maxi-Adapter

RX-102

lengths of 6.5m

 **WEIGHT**

0.47 kg per
linear metre



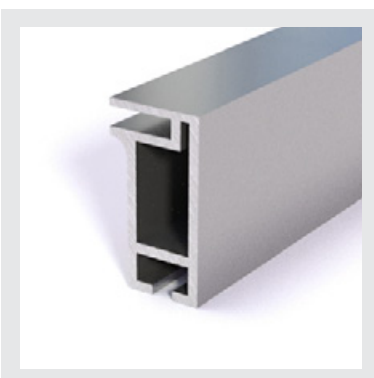
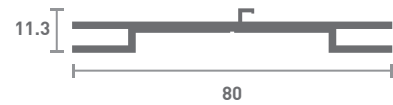
Maxi-Internal

RX-103

lengths of 6.5m

 **WEIGHT**

0.72 kg per
linear metre



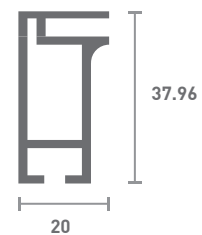
Single Sided

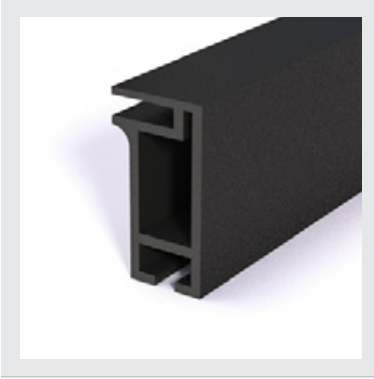
RX-104

lengths of 6.5m

 **WEIGHT**

0.55 kg per
linear metre





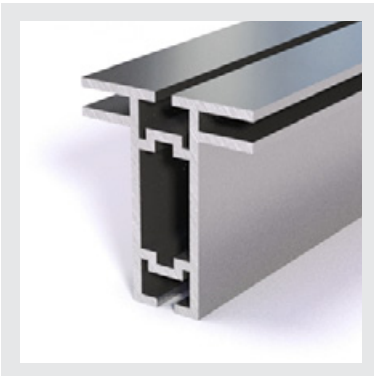
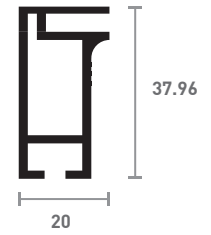
Single Sided Black

RX-104B

lengths of 6.5m


WEIGHT

0.55 kg per
linear metre



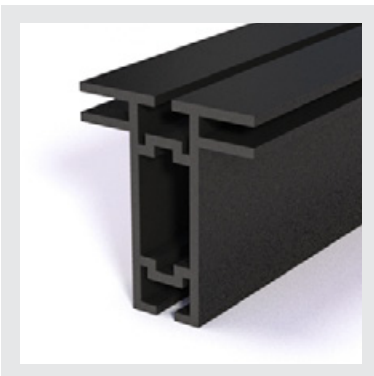
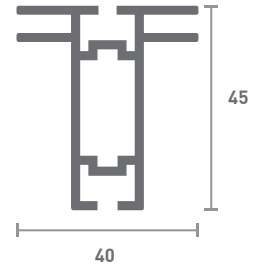
Double Sided

RX-105

lengths of 6.5m


WEIGHT

0.91 kg per
linear metre



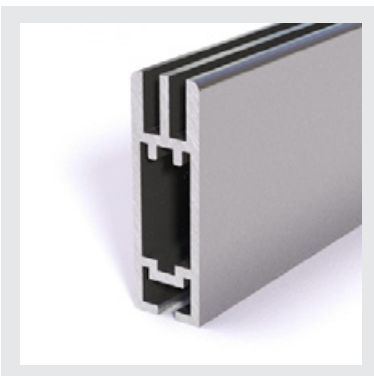
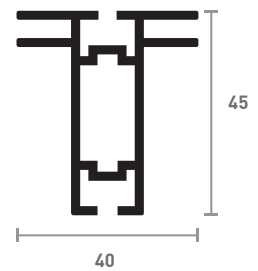
Double Sided Black

RX-105B

lengths of 6.5m


WEIGHT

0.91 kg per
linear metre



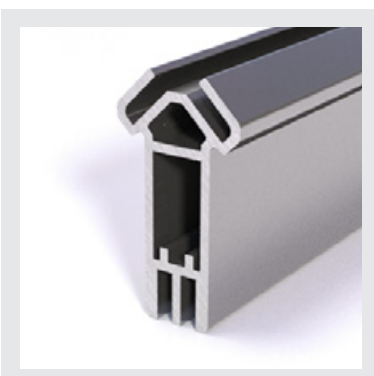
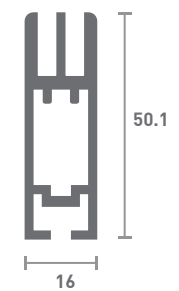
Contour

RX-106

lengths of 6.5m


WEIGHT

0.82 kg per
linear metre



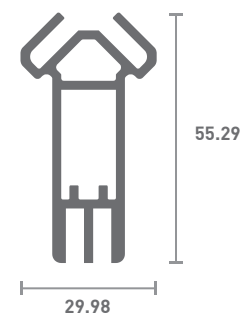
Cube

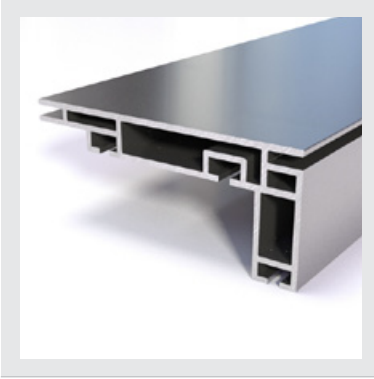
RX-107

lengths of 6.5m


WEIGHT

1.02 kg per
linear metre





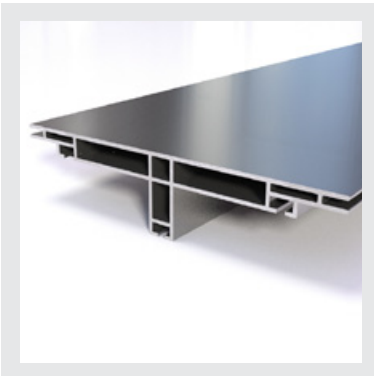
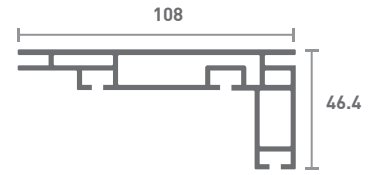
Single Sided Lightbox

RX-108

lengths of 6.5m


WEIGHT

2.04 kg per
linear metre



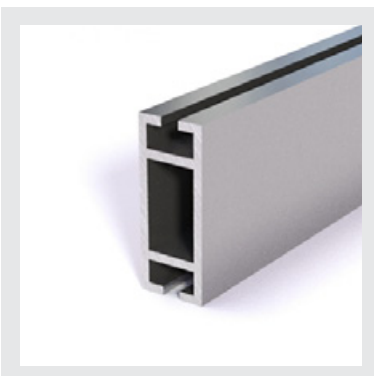
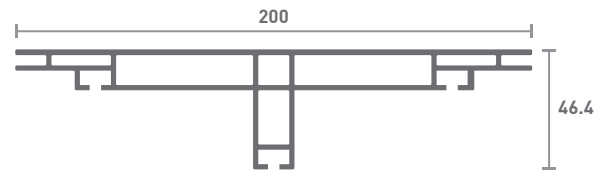
Double Sided Lightbox

RX-110

lengths of 6.5m


WEIGHT

3.14 kg per
linear metre



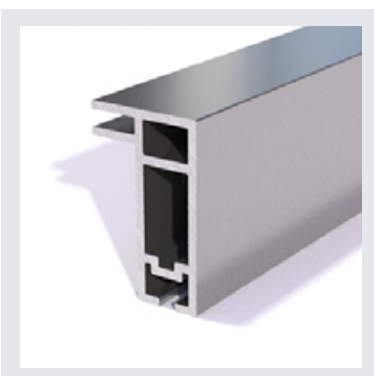
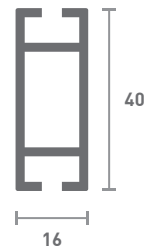
Support

RX-111

lengths of 6.5m


WEIGHT

0.59 kg per
linear metre



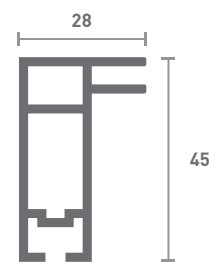
Wide Single Sided

RX-112

lengths of 6.5m


WEIGHT

0.83 kg per
linear metre



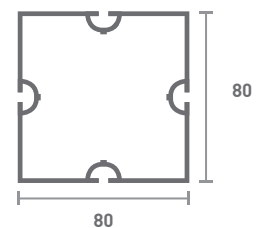
80 Structure

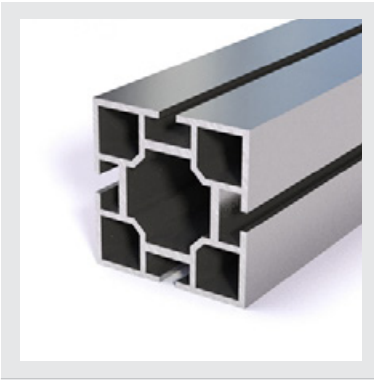
RX-113

lengths of 6.5m


WEIGHT

2.17 kg per
linear metre





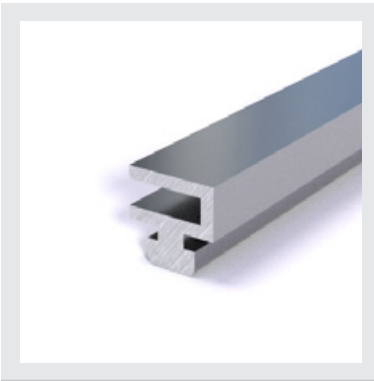
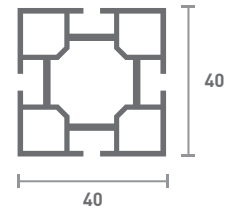
40 Structure

RX-114

lengths of 6.5m

 **WEIGHT**

1.35 kg per
linear metre



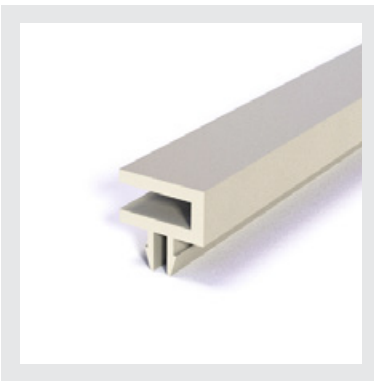
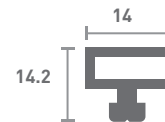
System Retro - Aluminium

RX-115

lengths of 6.5m

 **WEIGHT**

0.26 kg per
linear metre



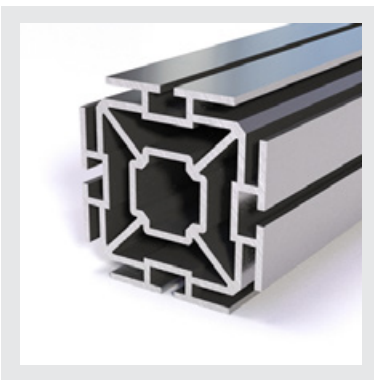
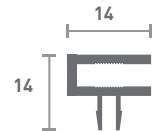
System Retro - Plastic

RX-116

lengths of 6.5m

 **WEIGHT**

0.12 kg per
linear metre



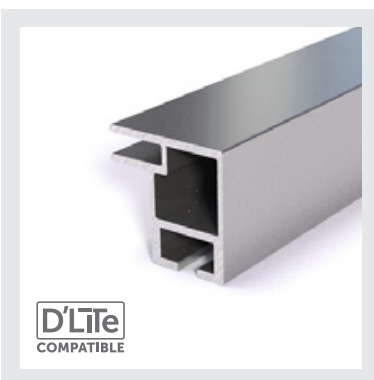
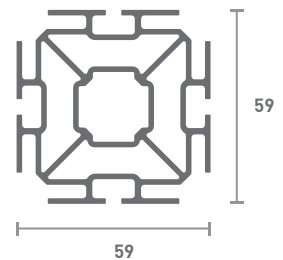
REXwall Post

RX-117

lengths of 6.5m

 **WEIGHT**

2.64 kg per
linear metre



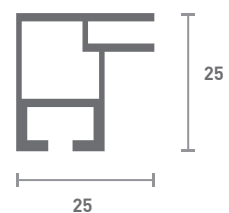
Single Sided D'LiTe

RX-118

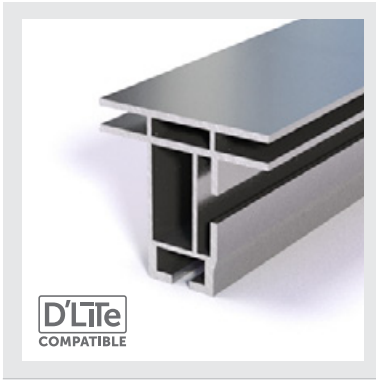
lengths of 6.5m

 **WEIGHT**

0.43 kg per
linear metre



D'LiTe
COMPATIBLE



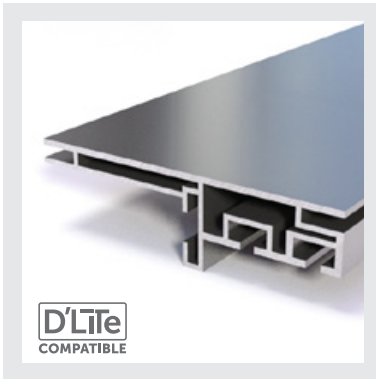
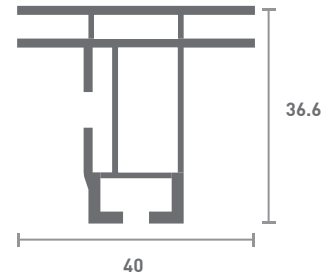
Double Sided D'LiTe

RX-119

lengths of 6.5m

 **WEIGHT**

0.60 kg per
linear metre



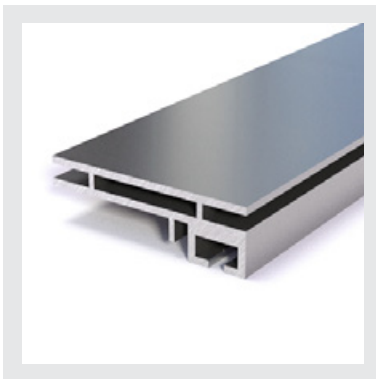
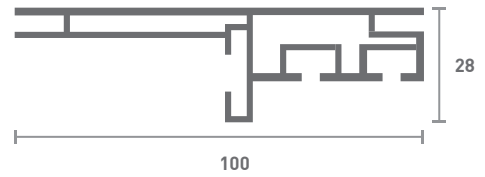
Wall Mount Lightbox D'LiTe

RX-120

lengths of 6.5m

 **WEIGHT**

1.45 kg per
linear metre



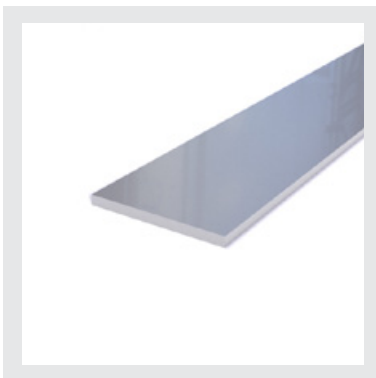
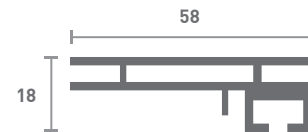
Backlit Lightbox

RX-121

lengths of 6.5m

 **WEIGHT**

0.83 kg per
linear metre



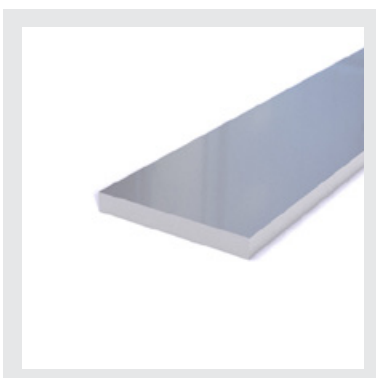
Flat Bar 40x3

RX-122

lengths of 6.5m

 **WEIGHT**

0.33 kg per
linear metre



Flat Bar 40x5

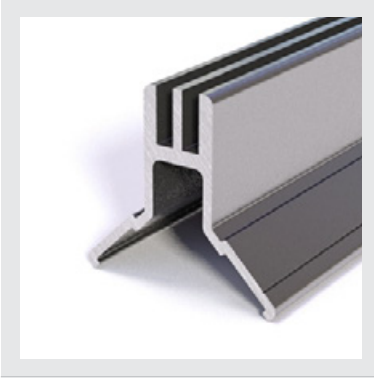
RX-123

lengths of 6.5m

 **WEIGHT**

0.54 kg per
linear metre





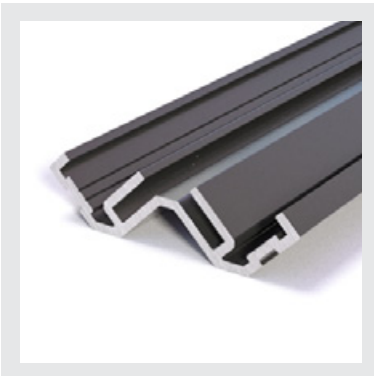
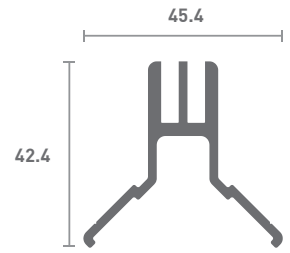
Universal External

RX-124

lengths of 6.5m

 **WEIGHT**

0.72 kg per
linear metre



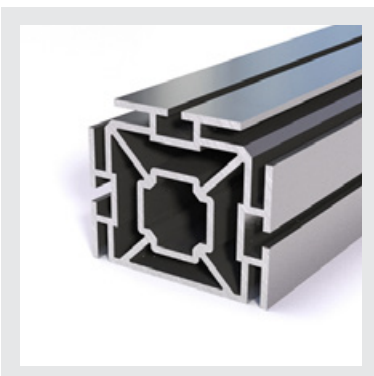
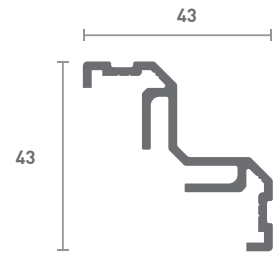
Universal Internal

RX-125

lengths of 6.5m

 **WEIGHT**

0.63 kg per
linear metre



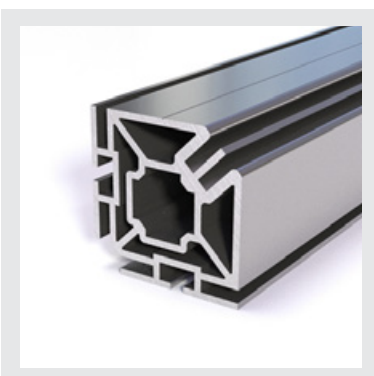
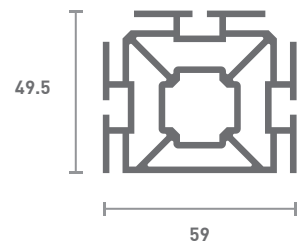
REXwall Tri Post

RX-126

lengths of 6.5m

 **WEIGHT**

2.35 kg per
linear metre



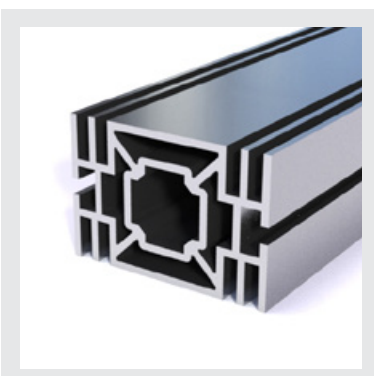
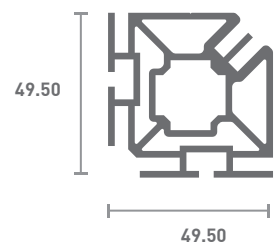
REXwall Corner Post

RX-127

lengths of 6.5m

 **WEIGHT**

2.20 kg per
linear metre



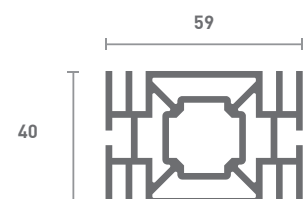
REXwall Two Way Post

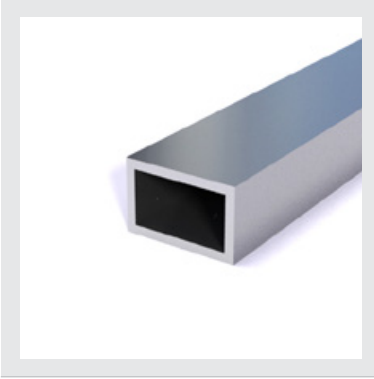
RX-128

lengths of 6.5m

 **WEIGHT**

2.25 kg per
linear metre





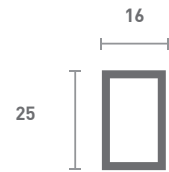
D'LiTe Support

RX-129

lengths of 6.5m


WEIGHT

0.35 kg per
linear metre



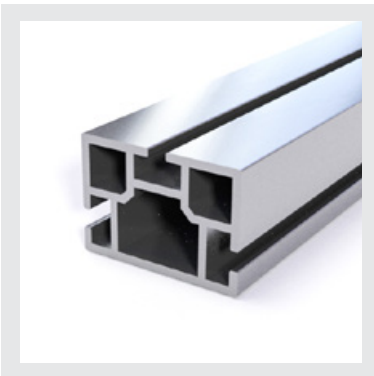
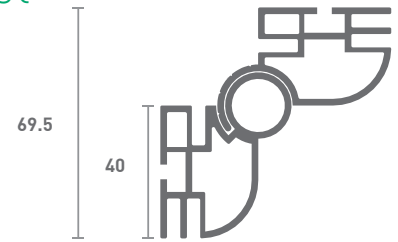
REXwall Adjustable Post

RX-130

lengths of 6.5m


WEIGHT

2.3 kg per
linear metre



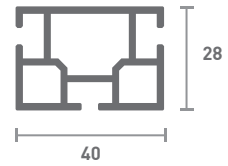
HD Support

RX-131

lengths of 6.5m

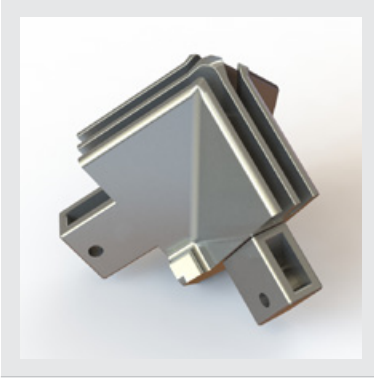

WEIGHT

1.02 kg per
linear metre



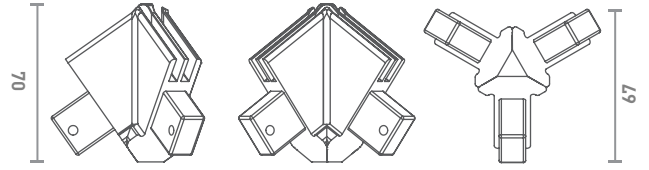


▲ ACCESSORIES



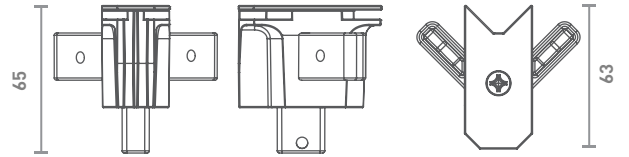
Single Sided Knuckle RX-200

WEIGHT
151 g
per unit



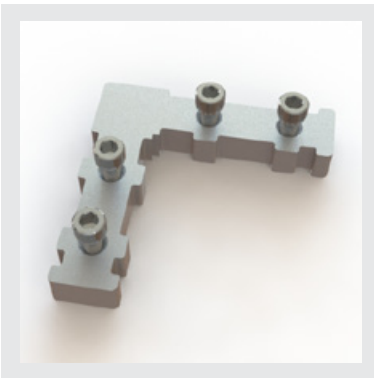
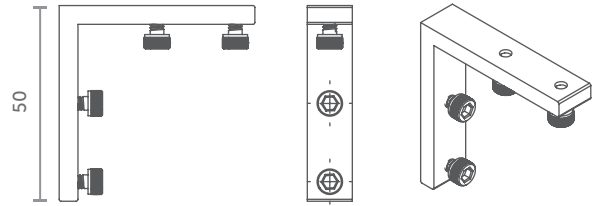
Double Sided Knuckle RX-202

WEIGHT
146 g
per unit



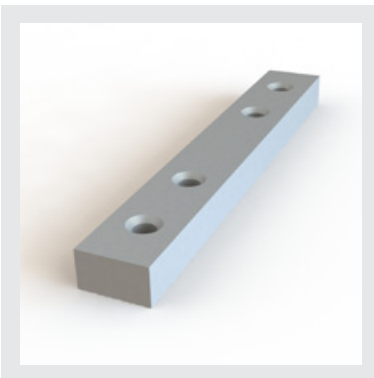
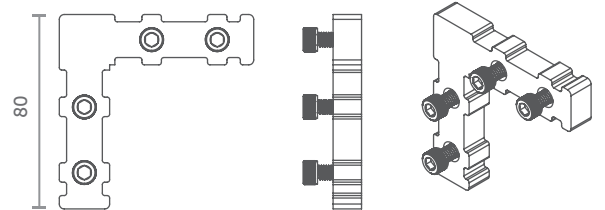
Standard Elbow RX-203

WEIGHT
20 g
per unit



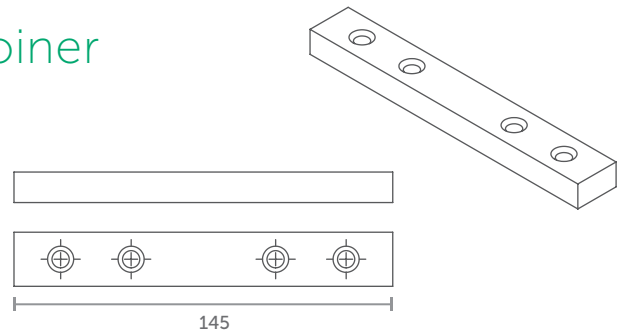
Heavy Duty Elbow RX-204

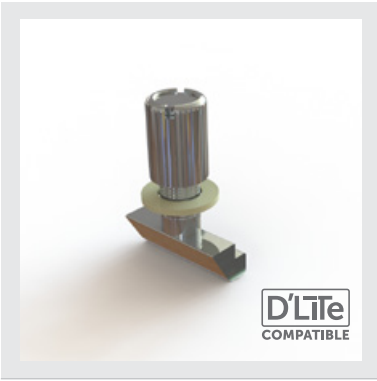
WEIGHT
90 g
per unit



Heavy Duty Joiner RX-205

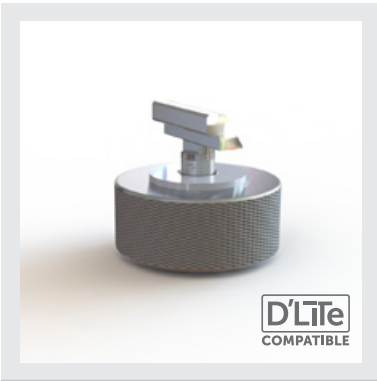
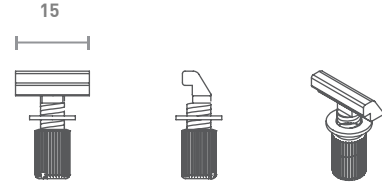
WEIGHT
109 g
per unit





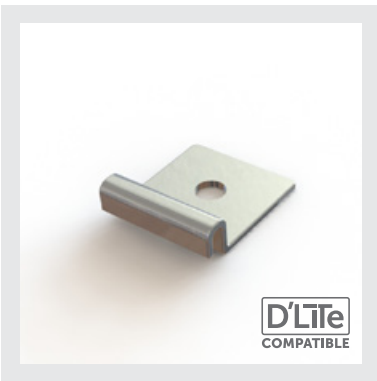
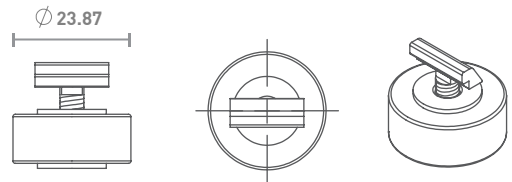
T-Nut
RX-206

WEIGHT
6 g
per unit



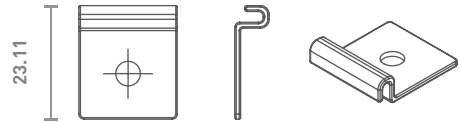
Knurled Nut
RX-207

WEIGHT
38 g
per unit



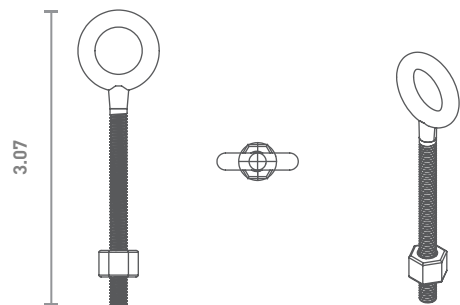
Wall Clip
RX-208

WEIGHT
6 g
per unit



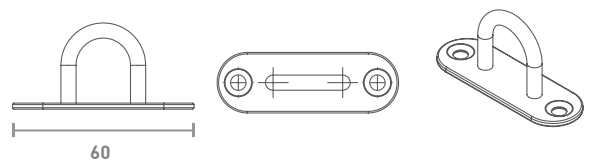
Eye Bolt
RX-209

WEIGHT
21 g
per unit



U Bolt
RX-210

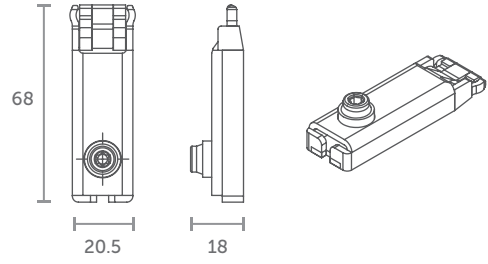
WEIGHT
35 g
per unit





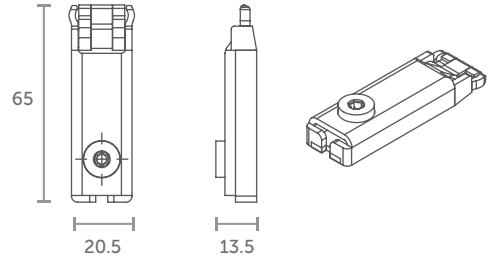
40 Structure Lock RX-211

WEIGHT
57 g
per unit



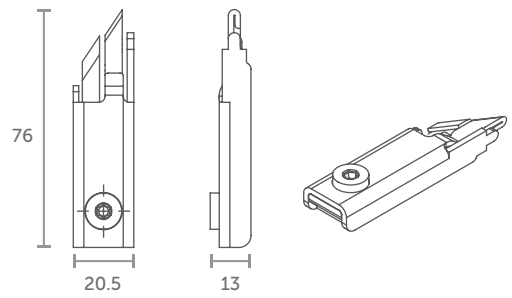
90° Lock RX-212

WEIGHT
55 g
per unit



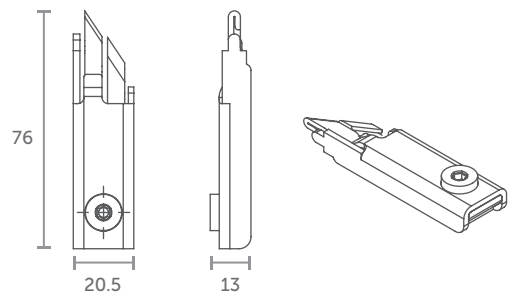
45° Lock (Right) RX-213-R

WEIGHT
53 g
per unit



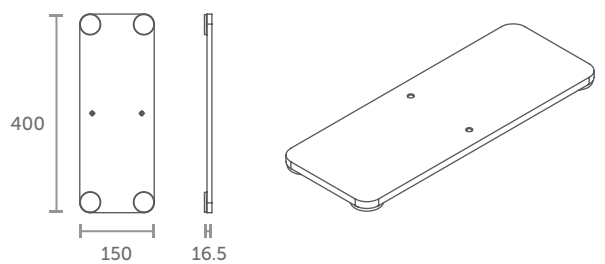
45° Lock (Left) RX-213-L

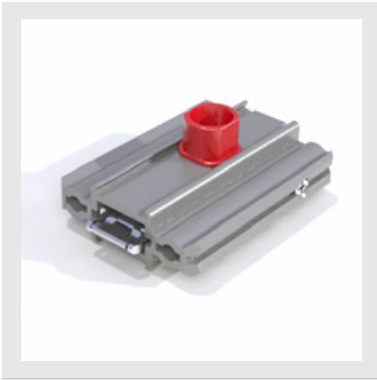
WEIGHT
53 g
per unit



Heavy Duty Feet RX-216

WEIGHT
4.85 kg
per unit



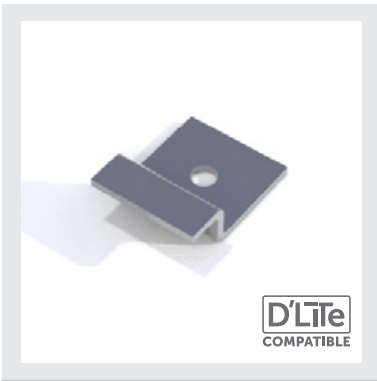
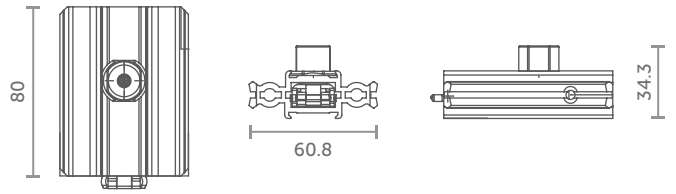


80 Structure Lock

RX-217

 **WEIGHT**

178 g
per unit

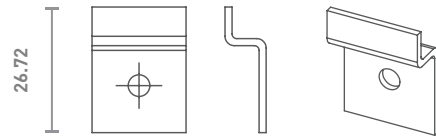


Picture Hanger

RX-218

 **WEIGHT**

7 g
per unit

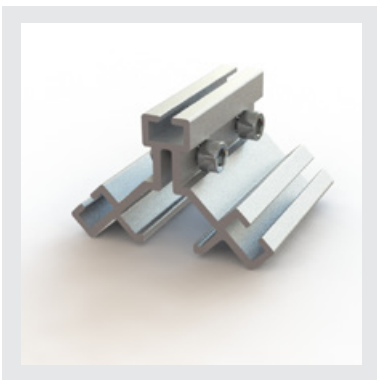
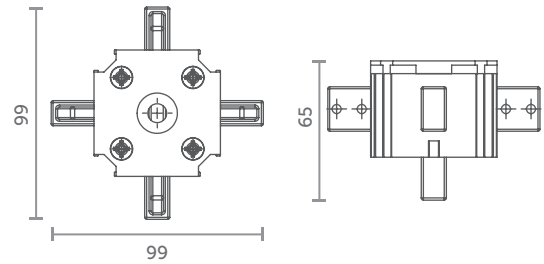


REXwall Knuckle

RX-220

 **WEIGHT**

253g
per unit

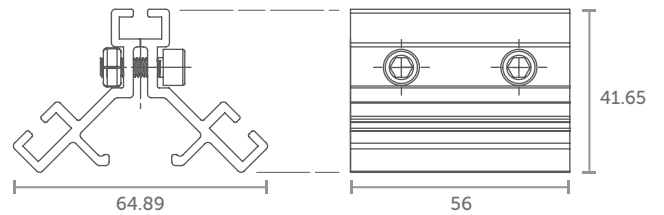


Cube Clamp

RX-222

 **WEIGHT**

71 g
per unit



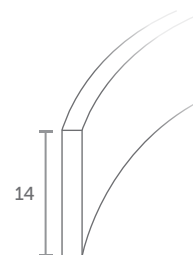
Silicon Rubber Strip

RX-223

Comes in 250m Roll

 **WEIGHT**

0.32 g
per metre

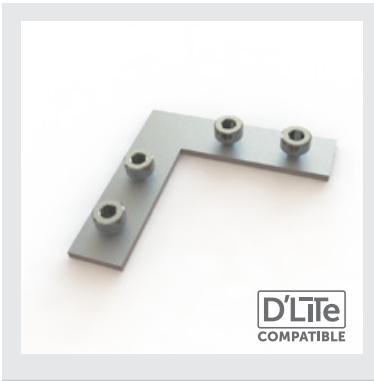
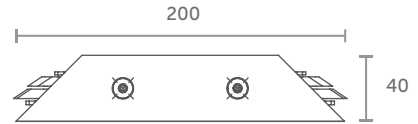




Corner Brace

RX-224

WEIGHT
200 g
per unit

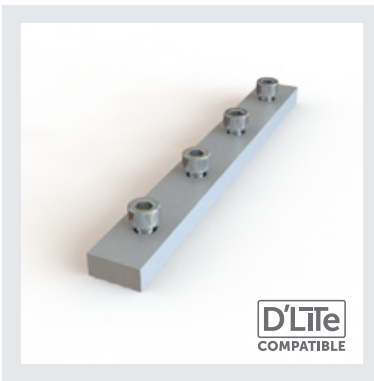
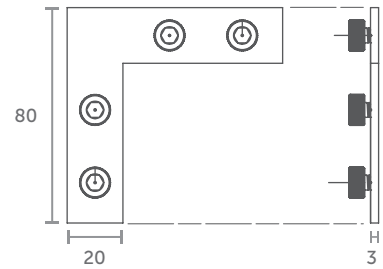


Flat Elbow

RX-225

WEIGHT
85 g
per unit

D'Lite
COMPATIBLE

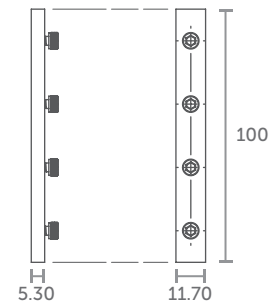


Standard Joiner

RX-226

WEIGHT
20 g
per unit

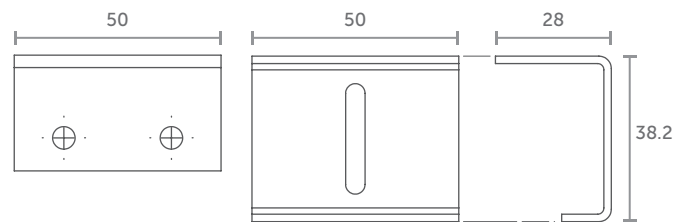
D'Lite
COMPATIBLE



105 Bracket

RX-227

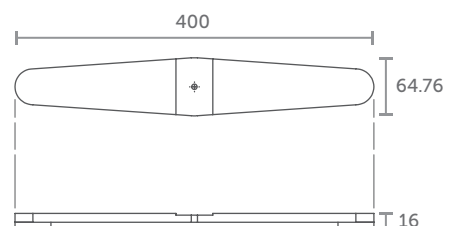
WEIGHT
16 g
per unit



Standard Feet

RX-228

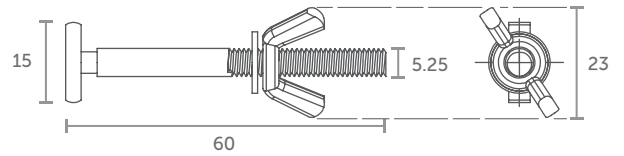
WEIGHT
1.66 kg
per unit





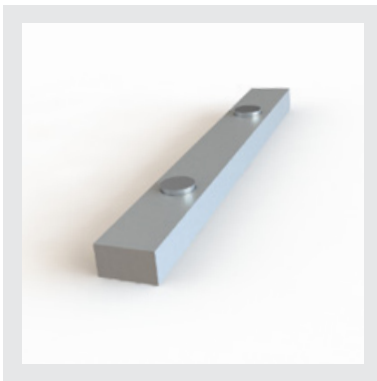
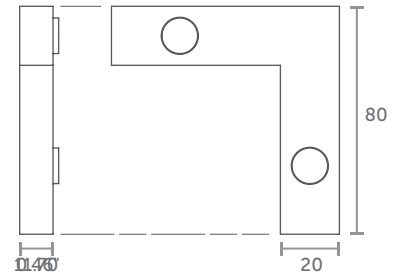
Coupling Bolt RX-229

WEIGHT
14 g
per unit



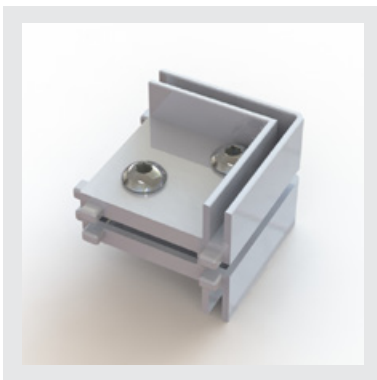
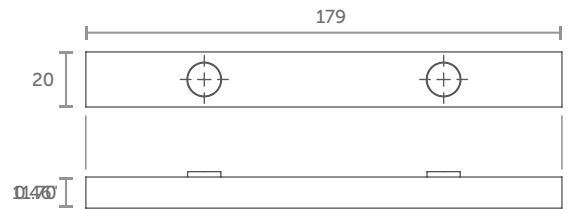
Tool Free Elbow RX-230

WEIGHT
105 g
per unit



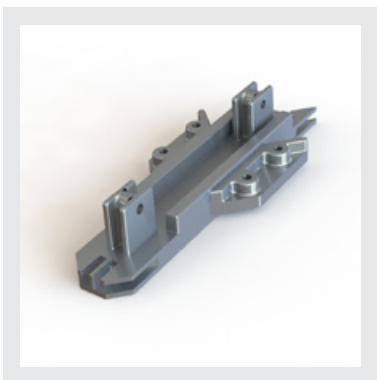
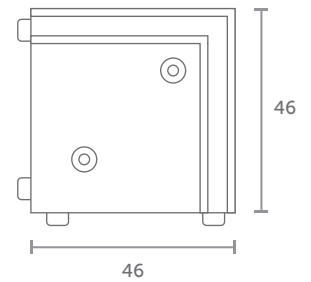
Tool Free Joiner RX-231

WEIGHT
131 g
per unit



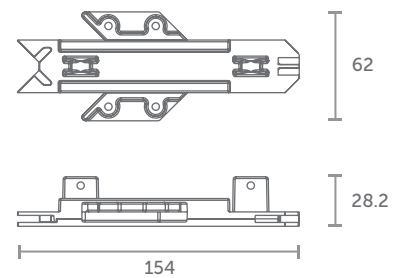
105 Corner Knuckle RX-232

WEIGHT
74 g
per unit



108 Cube Knuckle RX-233

WEIGHT
145 g
per unit



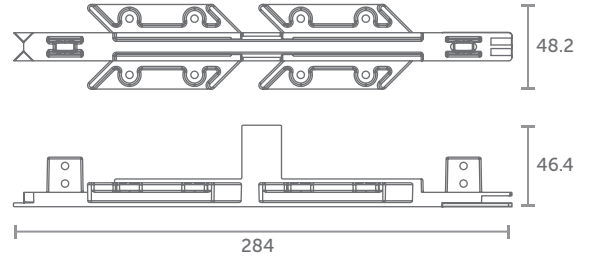


110 Cube Knuckle

RX-234

WEIGHT

255 g
per unit



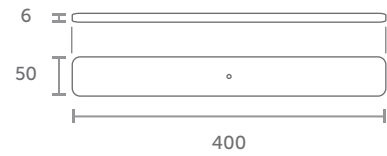
Flat Feet

RX-235

WEIGHT

952 g
per unit

D'Lite
COMPATIBLE



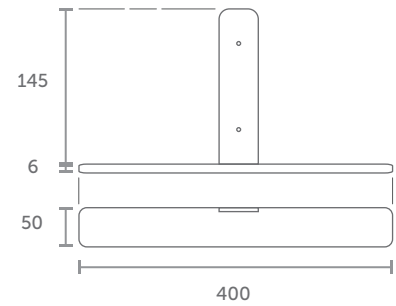
L Shaped Feet

RX-236

WEIGHT

1.19 kg
per unit

D'Lite
COMPATIBLE



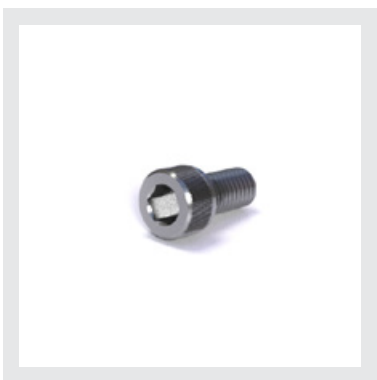
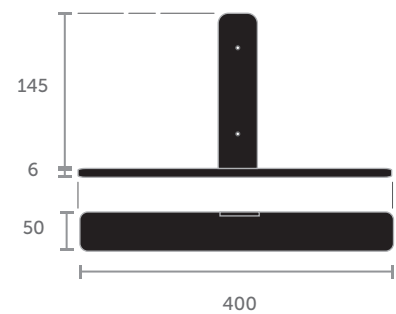
L Shaped Feet (Black)

RX-236B

WEIGHT

1.19 kg
per unit

D'Lite
COMPATIBLE



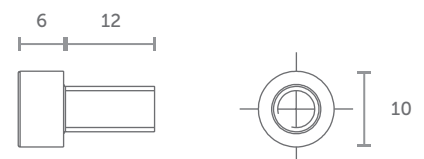
M6 12 Bolt

RX-237

box of 100

WEIGHT

5 g
per unit



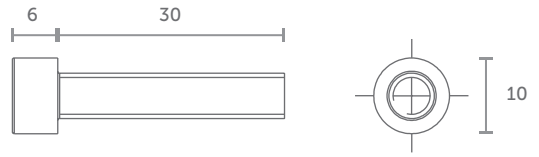


M6 30 Bolt

RX-238

box of 100

 **WEIGHT**
7 g
per unit

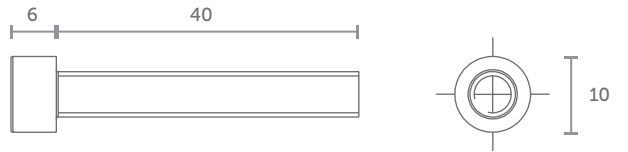


M6 40 Bolt

RX-239

box of 100


 **WEIGHT**
9 g
per unit

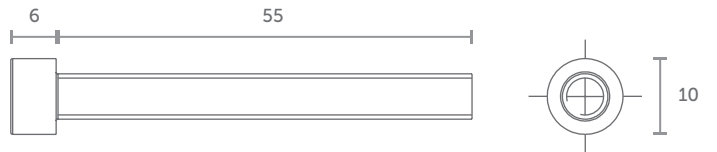


M6 55 Bolt

RX-240

box of 100

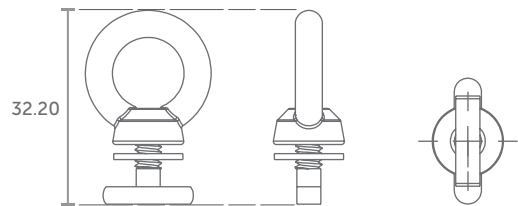
 **WEIGHT**
12 g
per unit



Rigging Profile Ring

RX-243


 **WEIGHT**
12 g
per unit

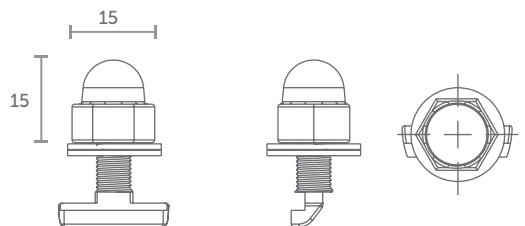


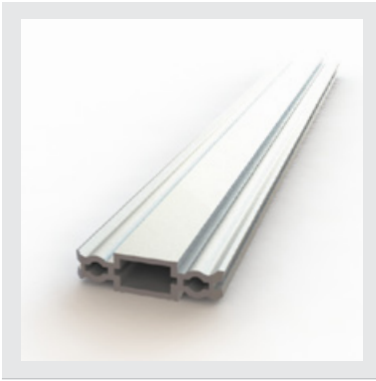
Heavy Duty T-Nut

RX-244

box of 100

 **WEIGHT**
21 g
per unit





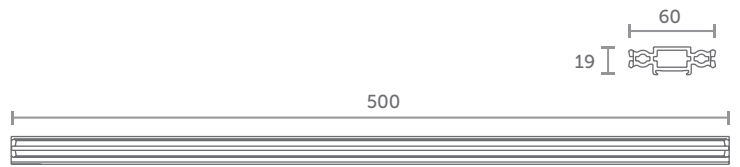
80 Structure Joiner

RX-245

box of 100

 **WEIGHT**

535 g
per unit



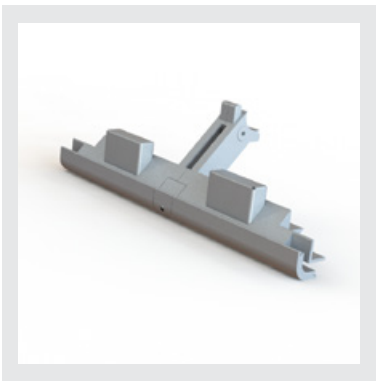
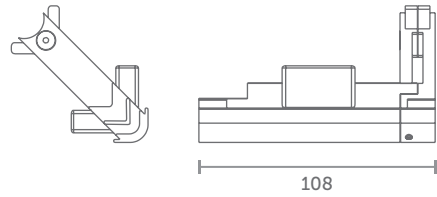
108 Corner Knuckle

RX-246

box of 100

 **WEIGHT**

164 g
per unit

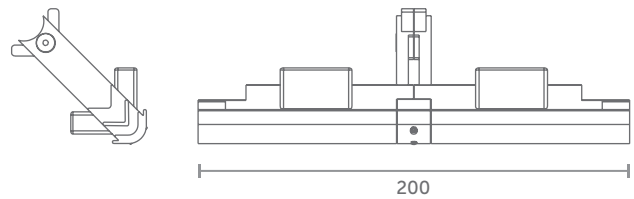


110 Corner Knuckle

RX-247

 **WEIGHT**

248 g
per unit

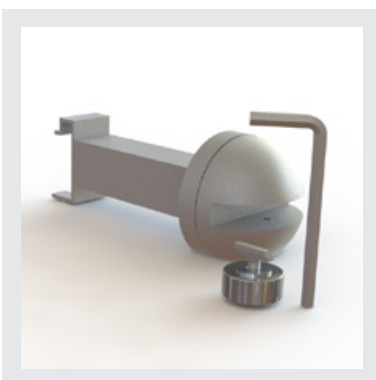
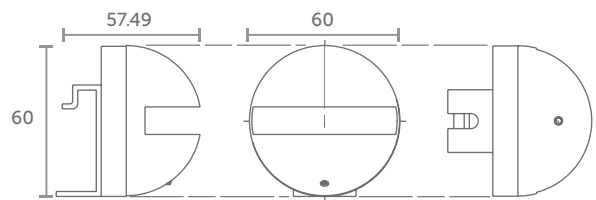


Magnetic Shelf Bracket Kit (Small)

RX-248

 **WEIGHT**

544 g
per unit

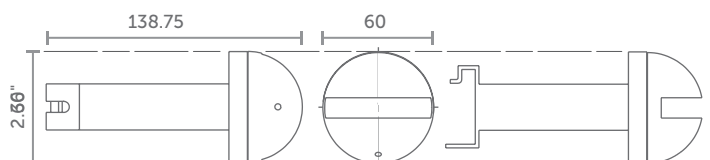


Magnetic Shelf Bracket Kit (Large)

RX-249

 **WEIGHT**

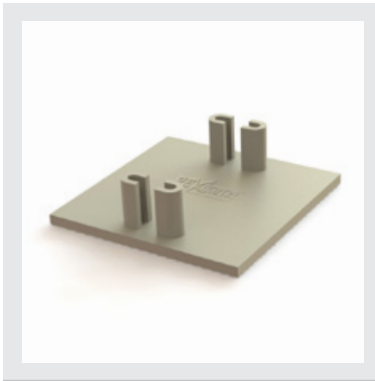
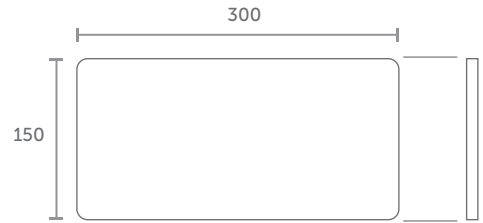
633 g
per unit





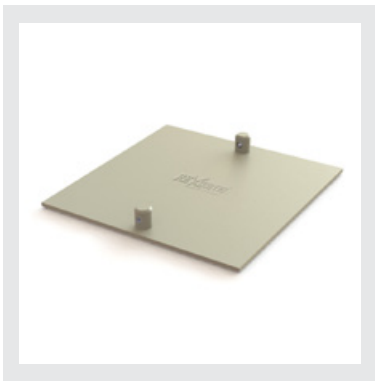
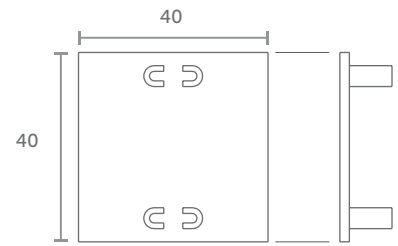
Acrylic Shelf RX-250

WEIGHT
566 g
per unit



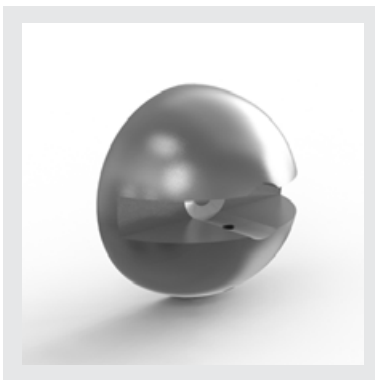
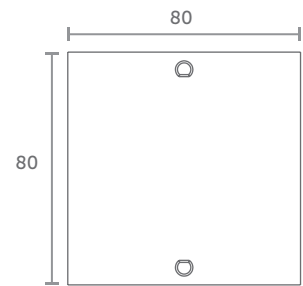
40 Structure Cap RX-252

WEIGHT
40 g
per unit



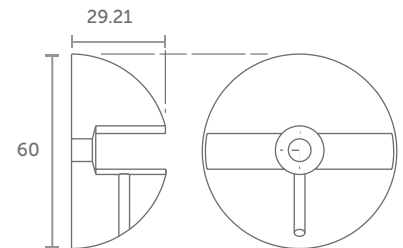
80 Structure Cap RX-253

WEIGHT
16 g
per unit



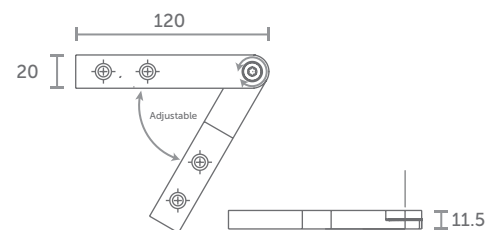
Heavy Duty Shelf Adapter RX-254

WEIGHT
308 g
per unit



Adjustable Heavy Duty Elbow RX-255

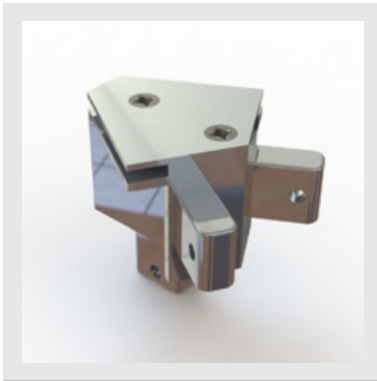
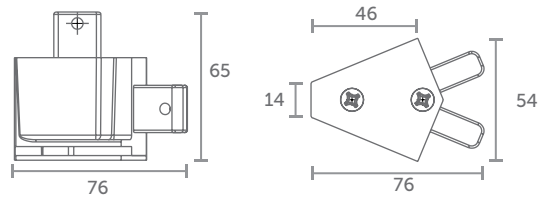
WEIGHT
320 g
per unit





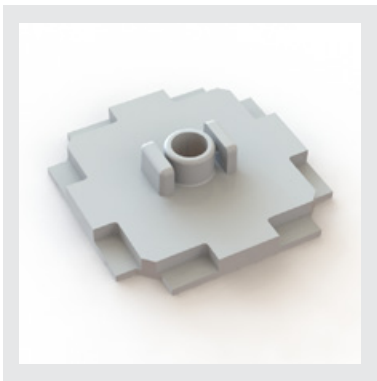
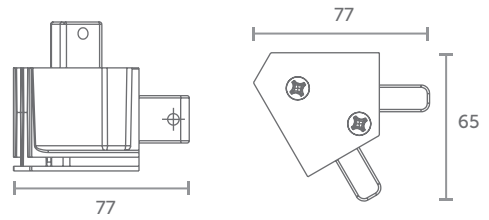
45 Degree Knuckle RX-256

WEIGHT
166 g
per unit



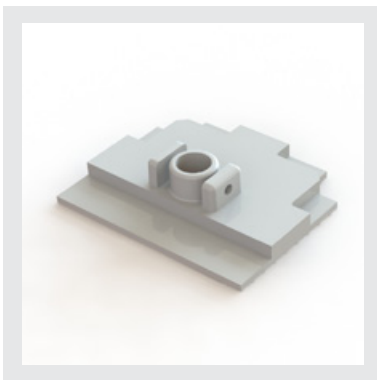
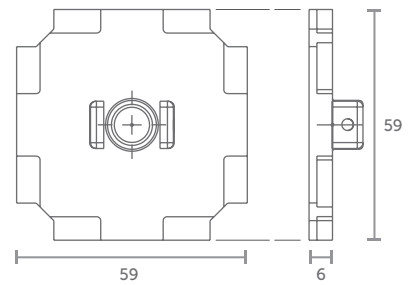
60 Degree Knuckle RX-257

WEIGHT
174 g
per unit



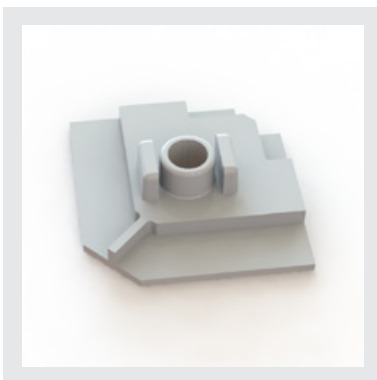
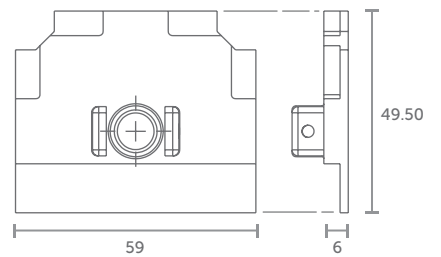
REXwall Post Cap RX-258

WEIGHT
44 g
per unit



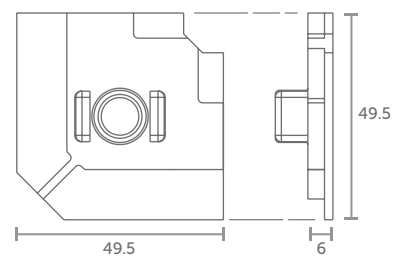
Rexwall Tri-Post Cap RX-259

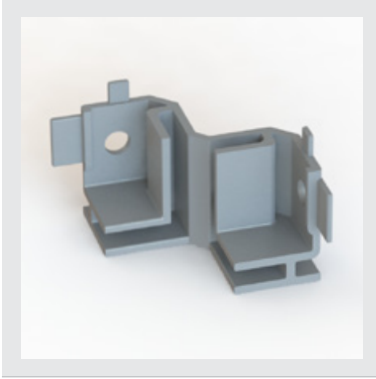
WEIGHT
34 g
per unit



REXwall Corner Post-Cap RX-260

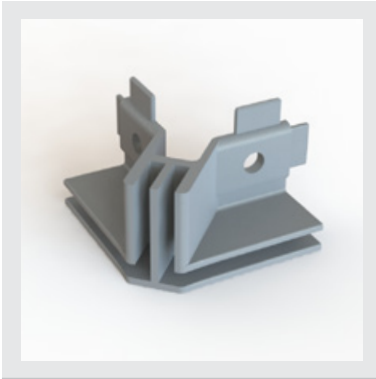
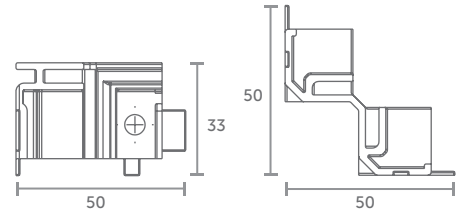
WEIGHT
24 g
per unit





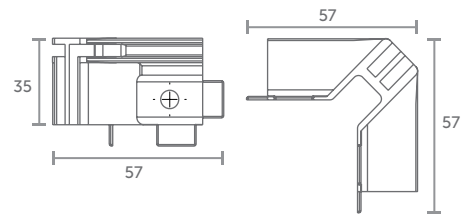
Universal Internal Knuckle RX-261

WEIGHT
9 g
per unit



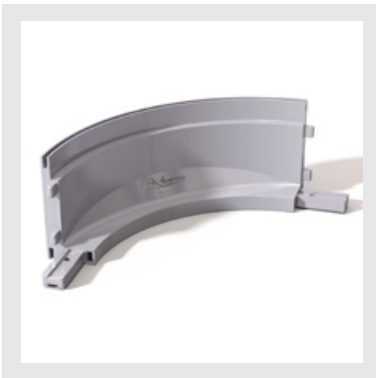
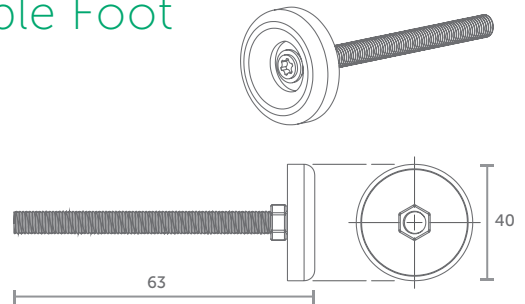
Universal External Knuckle RX-262

WEIGHT
13 g
per unit



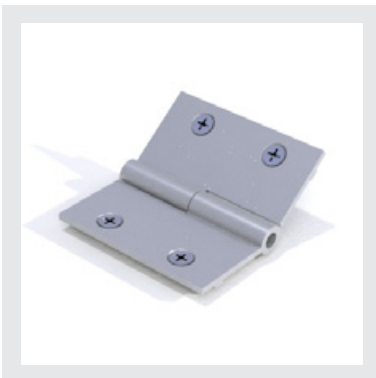
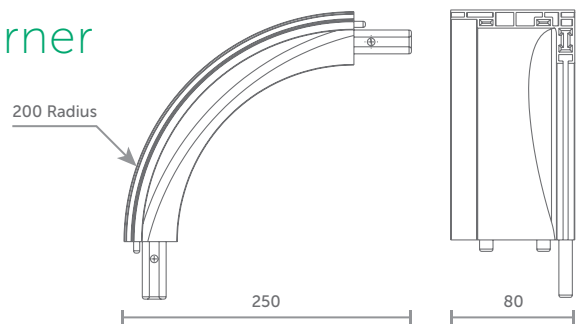
REXwall Adjustable Foot RX-263

WEIGHT
107 g
per unit



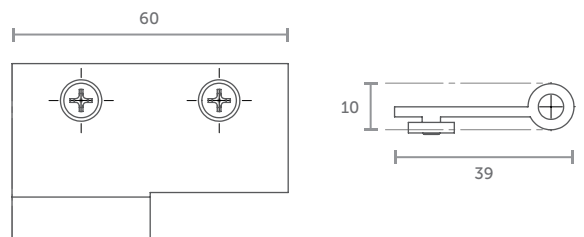
108 Curved Corner RX-264

WEIGHT
646 g
per unit



Hinge RX-267

WEIGHT
115 g
per unit

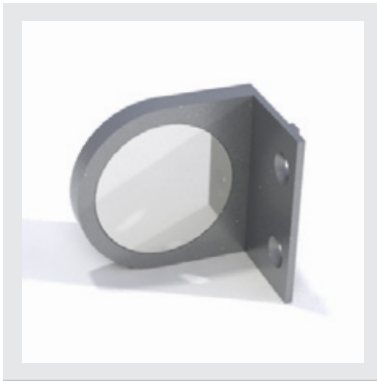
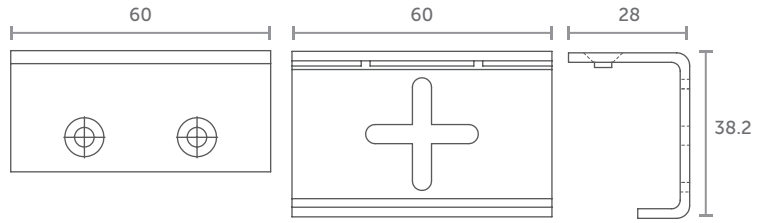




Heavy Duty 105 Bracket

RX-268

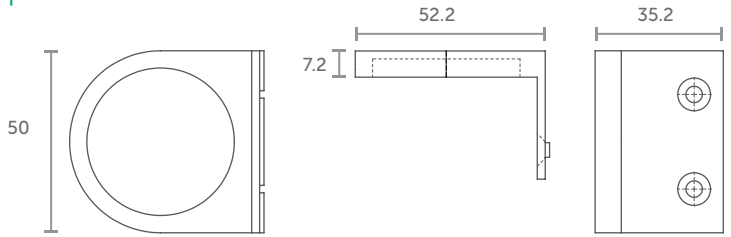
WEIGHT
85 g
per unit



Door Stop

RX-269

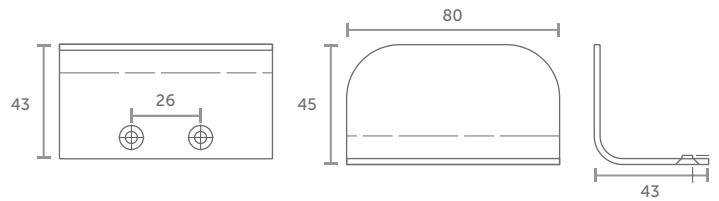
WEIGHT
170 g
per unit



Door Handle

RX-270

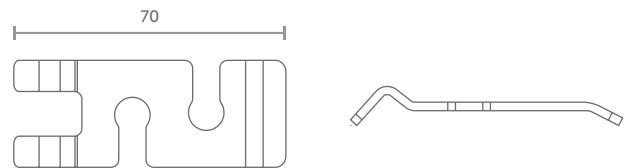
WEIGHT
134 g
per unit



Universal Clamp

RX-271

WEIGHT
35 g
per unit

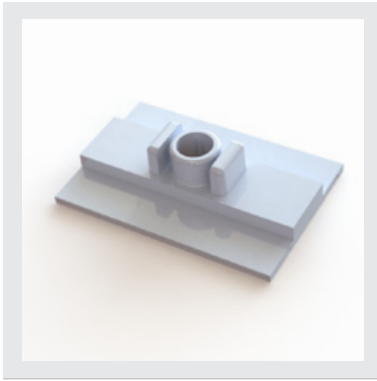


Corner Brace Large

RX-272

WEIGHT
430 g
per unit

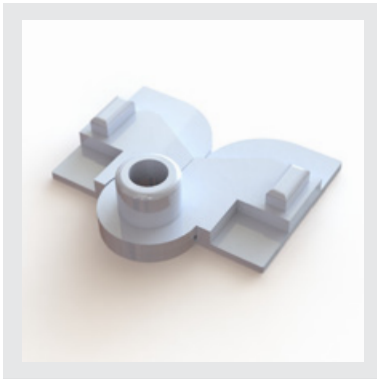
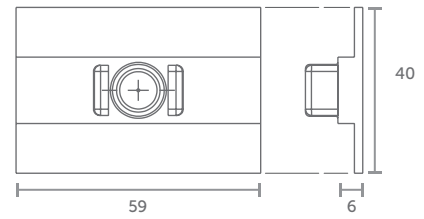




REXwall Two-Way Post Cap

RX-273

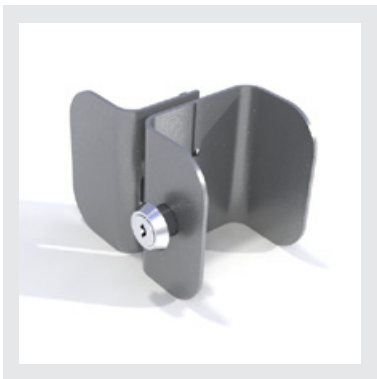
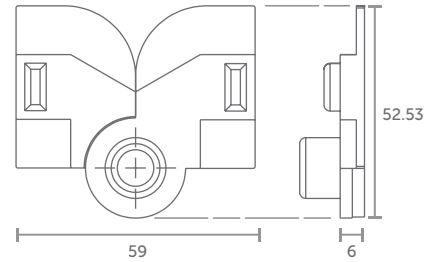
WEIGHT
23 g
per unit



REXwall Adjustable Post Cap

RX-274

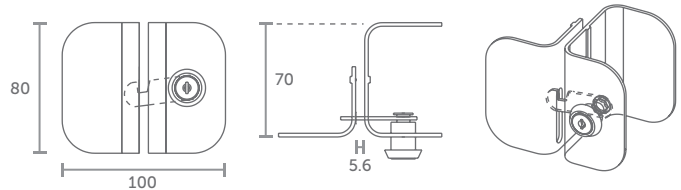
WEIGHT
28 g
per set



Lockable Door Handle

RX-275

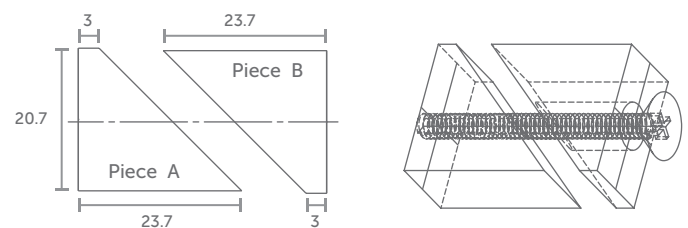
WEIGHT
372 g
per unit



REXwall Cap Lock

RX-276

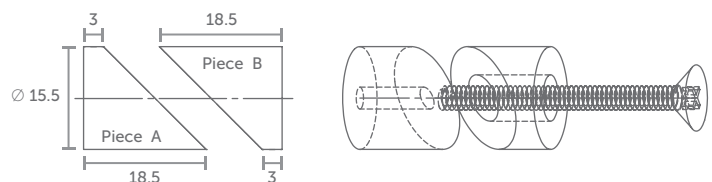
WEIGHT
19 g
per unit



REXwall Adjustable Cap Lock

RX-277

WEIGHT
12 g
per unit

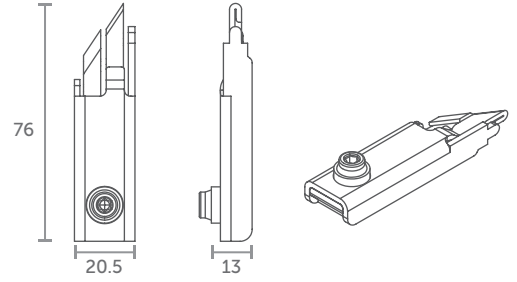




45° Structure Lock (Right)

RX-278-R

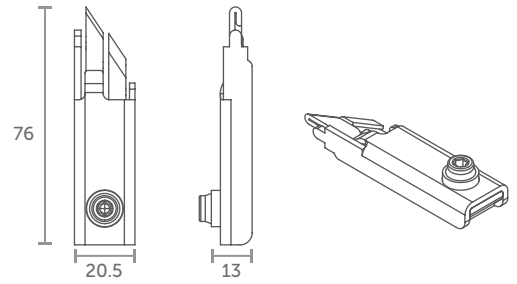

WEIGHT
53 g
per unit



45° Structure Lock (Left)

RX-278-L


WEIGHT
53 g
per unit



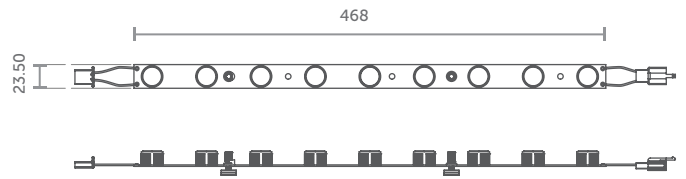


▶ LIGHTING



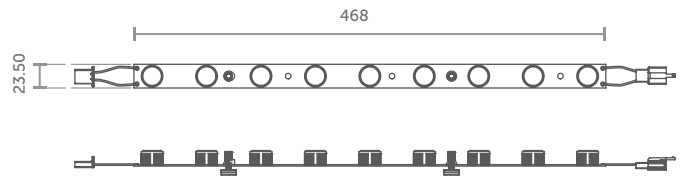
9-Light Module RX-300

WEIGHT
112 g
per unit



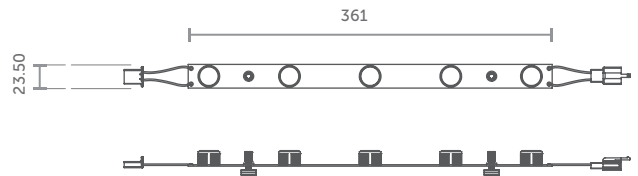
9-Light Dimmable Module RX-300-DIM

WEIGHT
112 g
per unit



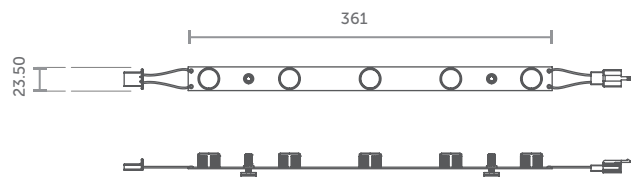
5-Light Module RX-301

WEIGHT
82 g
per unit



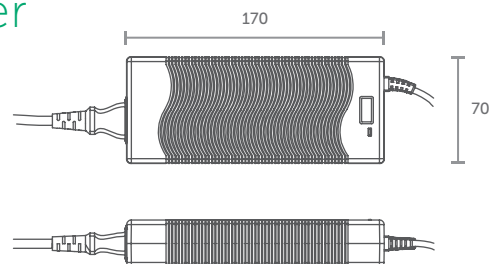
5-Light Dimmable Module RX-301-DIM

WEIGHT
82 g
per unit



6 AMP Transformer RX-303

WEIGHT
625 g
per unit

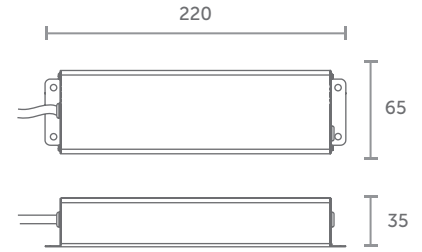




6 AMP Transformer Premium

RX-303 PREM

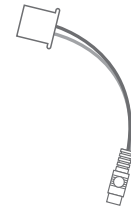
WEIGHT
625 g
per unit



3" Connector

RX-304

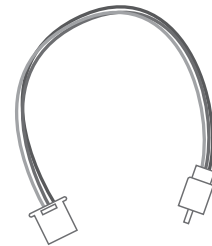
WEIGHT
9 g
per unit



12" Connector

RX-305

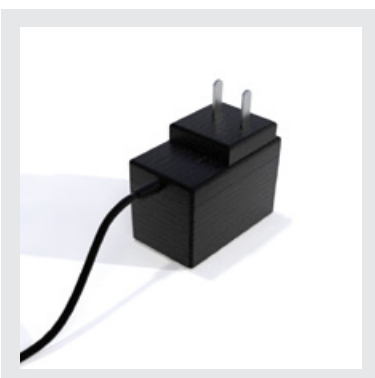
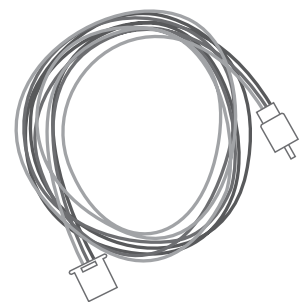
WEIGHT
19 g
per unit



6ft Connector

RX-306

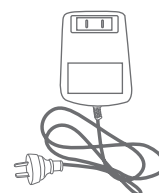
WEIGHT
106 g
per unit



Single Module Transformer

RX-307

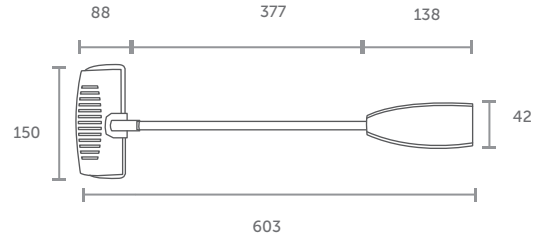
WEIGHT
246 g
per unit





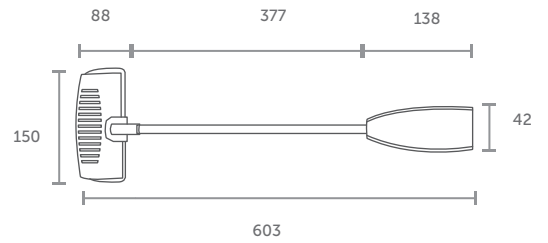
Halogen Arm Light RX-308

WEIGHT
557 g
per unit



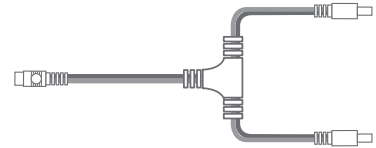
LED Arm Light RX-309

WEIGHT
557 g
per unit



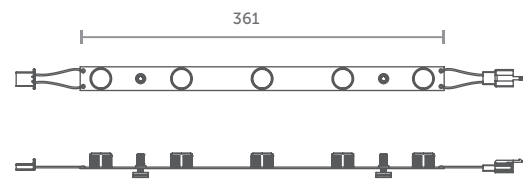
Parallel Connector RX-310

WEIGHT
49 g
per unit



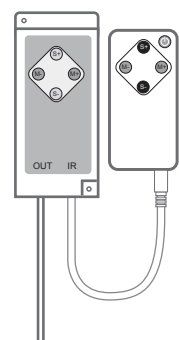
RGB LED 5-Light Module RX-311

WEIGHT
82 g
per unit



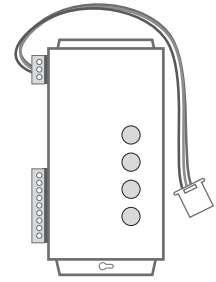
RGB Standard Controller RX-312

WEIGHT
68 g
per unit





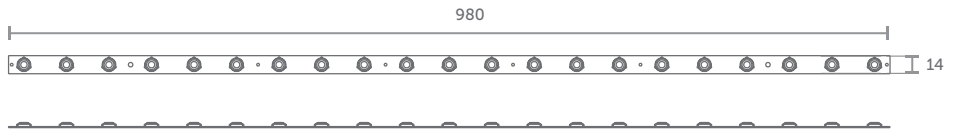
RGB Programmable Controller RX-313



WEIGHT
264 g
per unit



LaddeREX Module RX-314



PRE-ASSEMBLED RX-314 LaddeREX KITS

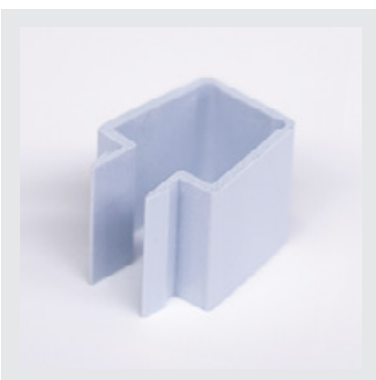
Code:	Suitable Frame Size:	Profile:	Module Gap:
RX-314-A	39.5 x 80"	RX-121	4.5"
RX-314-B	28 x 80"	RX-121	4.5"
RX-314-C	17 x 80"	RX-121	4.5"
RX-314-D	39.5 x 80"	RX-121	8"
RX-314-E	28 x 80"	RX-121	8"
RX-314-F	17 x 80"	RX-121	8"
RX-314-G	39.5 x 80"	RX-120/108	15"
RX-314-H	28 x 80"	RX-120/108	15"
RX-314-I	17 x 80"	RX-120/108	15"

WEIGHT
110 g
per unit



Single Wire Clip RX-316

WEIGHT
0.5 g
per unit



Multi Wire Clip RX-317

WEIGHT
3 g
per unit




10/6 Module Wire Harness
RX-318


WEIGHT
62 g
per unit



20/12 Module Wire Harness
RX-319


WEIGHT
215 g
per unit



30/18 Module Wire Harness
RX-320


WEIGHT
479 g
per unit



40/24 Module Wire Harness
RX-321


WEIGHT
792 g
per unit



8' 318 Extension
RX-322


WEIGHT
64 g
per unit



8' 319 Extension RX-323

WEIGHT
131 g
per unit



8' 320 Extension RX-324

WEIGHT
194 g
per unit



8' 321 Extension RX-325

WEIGHT
254 g
per unit



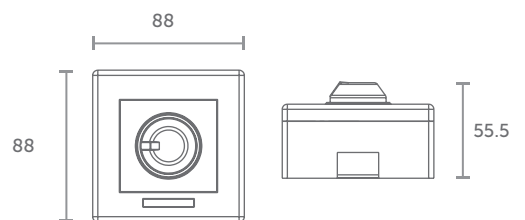
Power Repeater RX-326

WEIGHT
66 g
per unit



Dimmer RX-327

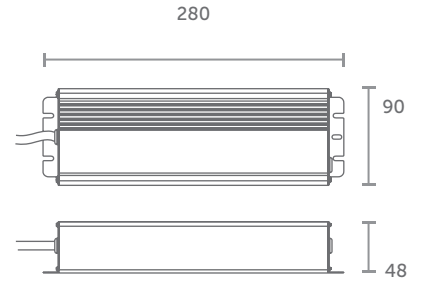
WEIGHT
123 g
per unit





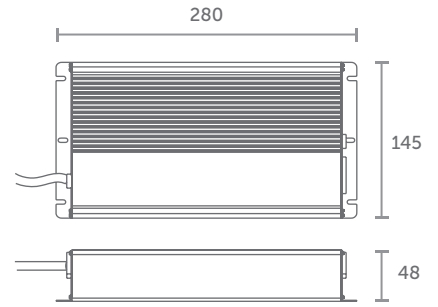
13.5 AMP Transformer RX-330

WEIGHT
1.91 kg
per unit



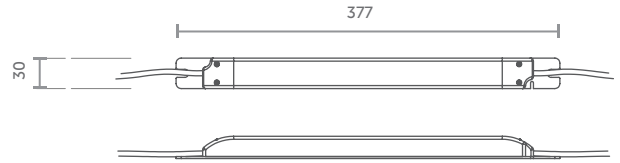
25 AMP Transformer RX-331

WEIGHT
3.71 kg
per unit



3.125 AMP Inline Transformer RX-332

WEIGHT
212 g
per unit



Power Lead for RX-332 RX-333

WEIGHT
105 g
per unit




Connecting Lead for RX-332 RX-334

WEIGHT
100 g
per unit



7.5 AMP Transformer

RX-335


WEIGHT
625 g
per unit



End Cap for RX-332

RX-336


WEIGHT
6 g
per unit



314 Saddle

RX-340
(x2 included with every RX-314)


WEIGHT
2 g
per unit



314 Screws

RX-341
(x2 included with every RX-314)


WEIGHT
000 g
per unit



314 Wire White

RX-342-WHITE
(9.5" of wire included with every RX-314)


WEIGHT
93 g
per unit



314 Wire Yellow

RX-342-YELLOW

(9.5" of wire included with every RX-314)


WEIGHT

93 g
per unit



Inline Adapter

RX-343


WEIGHT

13 g
per unit



314 Clip

RX-344


WEIGHT

16 g
per unit



Wire Connector

RX-345


WEIGHT

4 g
per unit

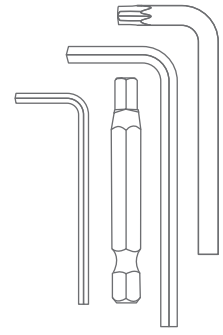


▼ TOOLS



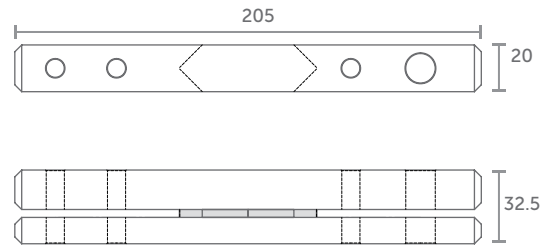
REXkey Kit RX-404

WEIGHT
57 g
per unit



Drill Guide RX-405

WEIGHT
897 g
per unit



Knuckle Drill Bit 8mm RX-406

WEIGHT
34 g
per unit



Lock Drill Bit 13mm RX-407

WEIGHT
108 g
per unit



Gasket Sewing Guide RX-408

WEIGHT
150 g
per unit



Sample Kit RX-409

000 g
per unit



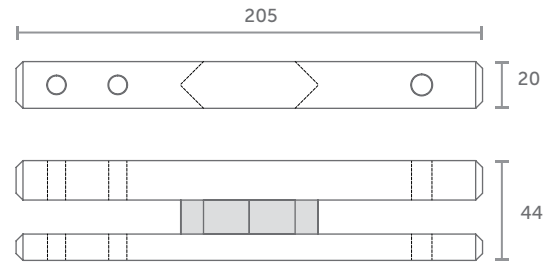
Pneumatic Punch RX-410

000 g
per unit



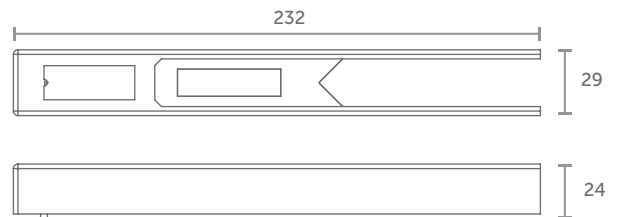
40 Structure Drill Guide RX-411


WEIGHT
897 g
per unit



Drill Guide Adapter RX-412-A


WEIGHT
897 g
per unit



Custom Printed 3D Parts RX-413

*Contact your
REXframe representative
for more information



POS Kit RX-500

000 g
per unit